

KUALA LUMPUR METRO GROUP

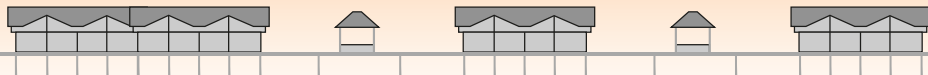
Quarterly Circular

ISSUE 4

Oct - Dec 2004



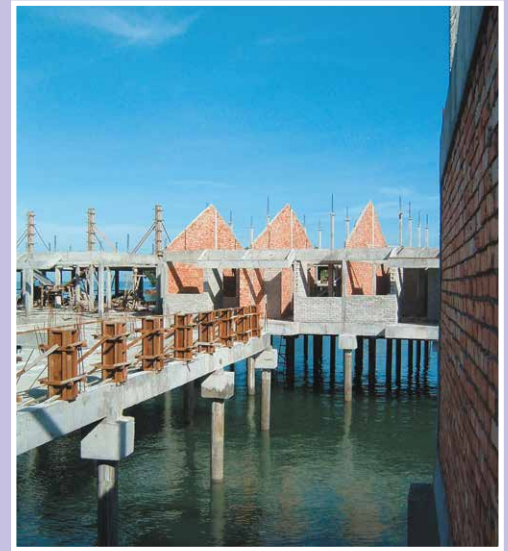
We are different . . . we build your dream home onto the seas !



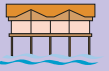
Developer



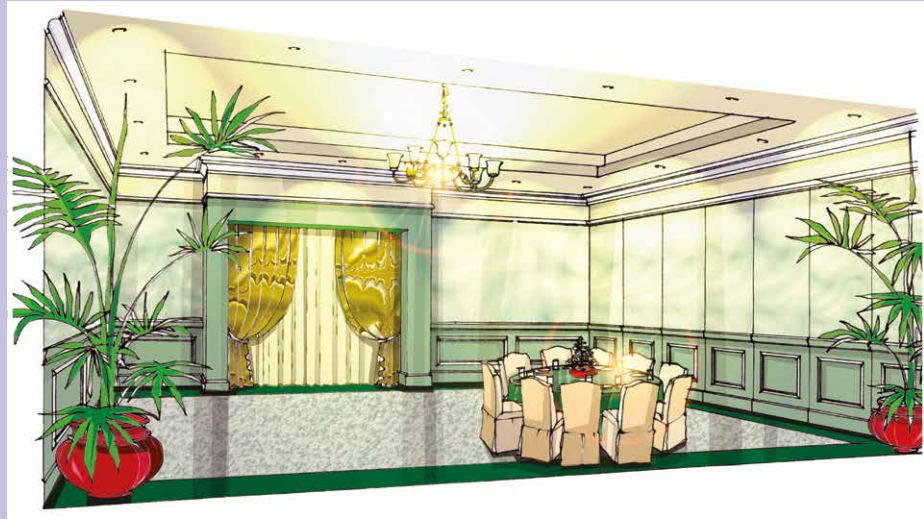
Kuala Lumpur Metro Development Sdn. Bhd. (622637-K)
(a member of Kuala Lumpur Metro Group)



Construction Progress
November 2004



Ballroom

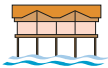


Lobby



Banquet hall





Construction forecast

Task Name	Duration	2003	2004											
		Dec	Jan	Feb	Mac	Apr	May	June	July	Aug	Sept	Oct	Nov	
Earthworks	4 mths													
Piling Works (i) <i>Water Chalets</i> (ii) <i>Main Bldg & STP</i>	4 mths 2 1/2 mths													
Building works (i) <i>Water Chalets</i> (ii) <i>Main Bldg & STP</i> - <i>Tender & Awards</i> - <i>Construction</i>	19 mths 1 mth 19 mths													
M & E works (i) <i>Tender & Awards</i> (ii) <i>Installation works</i>	4 mths 18 mths													
I. D. Works (i) <i>Tender & Awards</i> (ii) <i>Wall & floor finishes</i> (iii) <i>Ceiling finishes</i> (iv) <i>Mill works</i> (v) <i>Loose items</i>	16 mths 4 mths 12 mths 10 mths 12 mths 3 mths													
Landscape	3 mths													
T & C and CF	2 mths													

and our team . . .

Architect



Seth Architect
No. 21-3-1D, Jalan 8/146 Bandar Tasik Selatan,
57000 Kuala Lumpur.

Hydraulic engineer



HYDEC Engineering Sdn. Bhd.
267B & C, Jalan Bandar 12, Metro 2, Taman Melawati,
53100 Kuala Lumpur.

C & S engineer



Jurutera Perunding Cepak, Kuala Lumpur
160-4-7, Kompleks Maluri, Jalan Jejaka, Taman Maluri,
55100 Kuala Lumpur.

Town planner



Arah Rancang Sdn Bhd
No. 24A, Tingkat 1, Jalan Tengku Ampuan Zabedah 9/G
Seksyen 9, 40100 Shah Alam.

M & E engineer



Perunding AC & Rakan Sdn Bhd
29 & 29A, Lorong Sentul Kechil, Off Jalan Sentul,
51100 Kuala Lumpur.

Coordination consultant



LP Planning & Management
No. 13, 1st Floor, Jalan Pasar Baru,
71000 Port Dickson, Negeri Sembilan.

Eia consultant



Perunding UEP
No. 36A, Jalan Impian Emas 7, Taman Impian Emas,
Skudai, 81300 Johor Bahru, Johor.

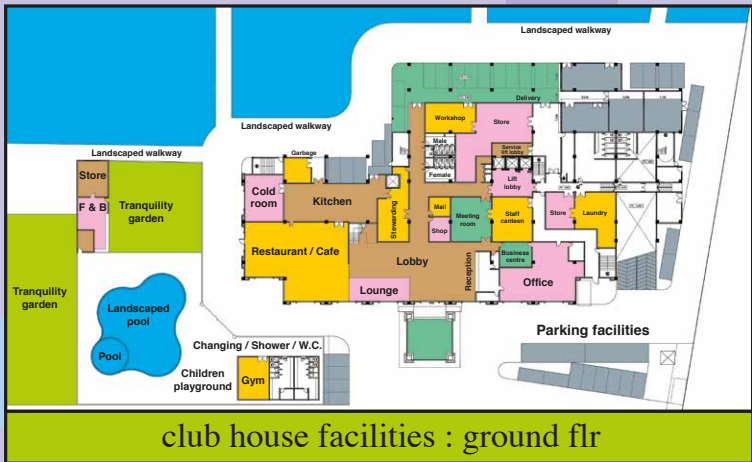
Land surveyors



Jurukur Salaiman Land Surveyors
35-1, Jalan 3A/2B, Taman Desa Bakti,
68100 Batu Caves, Kuala Lumpur.



The Legend Water Chalet : the club house facilities

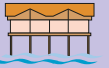


Lobby lounge & reception



Coffee house





Developer



Kuala Lumpur Metro Development Sdn. Bhd.
(a member of Kuala Lumpur Metro Group)
Suite 8.1, 8th Floor, Yayasan Selangor Building No. 99,
Jalan Bukit Bintang, 55100 Kuala Lumpur Malaysia.

Marketing
Consultants



AP Assets Ltd 泛亞環球物業顧問有限公司
Unit 1904, 19/F, Sino Plaza, 255 Gloucester
Road, Causeway Bay, Hong Kong.

Operator



The Legend Group of Hotels & Resorts
Putra Place, 100 Jalan Putra, 50350
Kuala Lumpur Malaysia.



The Developer is registered with
Real Estate & Housing Developers' Association Malaysia
REHDA (Reg. No : HDA2200NS 0125/04)

Kuala Lumpur Head Office



TEL +603 2144 7768

FAX +603 2144 7798

EMAIL mail@klmetropolitan.com

WEBSITE www.klmetropolitan.com

Dubai office

404 Al Attar Tower , Sheikh Zayed Road P O Box 119834, Dubai , UAE

Email : mail@klmetropolitan.com

The next quarterly circulars for next year will be issued in Feb , May , Aug & Nov 2005 respectively.

A Trusted Name : Kuala Lumpur Metro Group : the Multiple Award-winning Company



CNBC's International Property Awards
(London) 2007

- * "Best Architecture "
- * "Best Development "



6th Asia Pacific International
Honesty Enterprise Keris Award 2007



3rd Malaysia Business of The Year Award

- * "Emerging Entrepreneur of The Year 2008 "
- * "Superior Company "