

KUALA LUMPUR METRO GROUP

# Quarterly Circular

ISSUE 1

Jan - Mar 2005



*We are different ... we build your dream home onto the seas !*

Developer  
**KI**METRO™

Kuala Lumpur Metro Development Sdn. Bhd. (622637-K)  
( a member of Kuala Lumpur Metro Group )



## Construction Progress , February 2005





**Official Launching of The Legend Service Suites  
on 28th December 2004 by YB Dato' Ahmad Zahid Hamidi,  
Timbalan Menteri Pelancongan**



**28th December 2004**

**... with consultants , contractors & site workers**





# Triumph of a



With the success of our project , The Legend Water Chalets at Port Dickson , we have been invited to participate in the Melaka State Government's Privatisation Programme on the development of the first water chalets in Melaka - " Melaka Heights Water Chalets " on a piece of land of 20 acres at Pantai Lereh , Tanjung Kling , Melaka. The development composition consists of water chalets , garden chalets , service suites & other supporting facilities. The construction of the project is scheduled to commence later this year and is expected to be completed by the year 2008.





# Melaka vision!



Signing of agreement with the state government of Melaka at the office of Jabatan Ketua Menteri Melaka on 16th February 2005



DATED THIS DAY OF 16TH FEBRUARY 2005

BETWEEN  
**THE STATE GOVERNMENT OF MALACCA**  
AND  
**KUALA LUMPUR METRO GROUP**

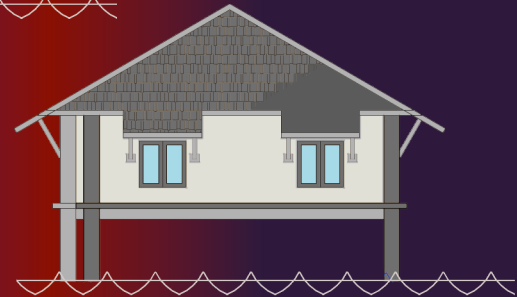
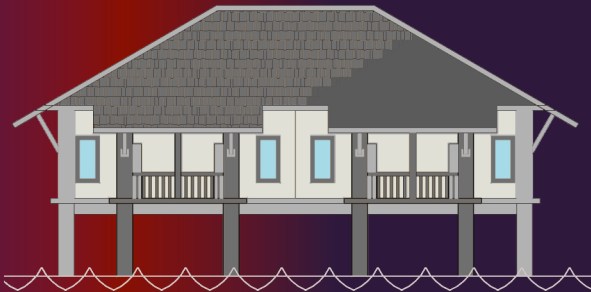
**AGREEMENT**

*In respect of the water chalets development at  
Pantai Lereh, Tanjung Kling, Melaka*

KL Metro  
Group



From left to right : member of Parliament - YB Haji Idris Bin Haron ; secretary of Melaka State - Dato' Wira Haji Ahmah Rusli Bin Joharie; Chief Minister of Melaka - YAB Dato' Seri Haji Mohd Ali Bin Mohd Rustam ; directors of Kuala Lumpur Metro Group - C.T.Yap & T.F.Low.



Artist perspective of Melaka Heights Water Chalets





Tremendous construction progress has been made since the commencement of works earlier last year. Today, we are pleased to announce that the building structure for all single storey water chalets Type A, M, & AA(L) has been completed. For water chalets Type AA(U) building structure is scheduled to be completed by April 2005; and for Type X by June this year.



## Construction Progress, February 2005

Developer  
  
 ( 622637-K )

Kuala Lumpur Metro Development Sdn. Bhd.  
 ( a member of Kuala Lumpur Metro Group )  
 Suite 8.1, 8th Floor, Yayasan Selangor Building No. 99,  
 Jalan Bukit Bintang, 55100 Kuala Lumpur Malaysia.

Marketing  
 Consultants  


AP Assets Ltd 泛亞環球物業顧問有限公司  
 Unit 1904, 19/F, Sino Plaza, 255 Gloucester  
 Road, Causeway Bay, Hong Kong.

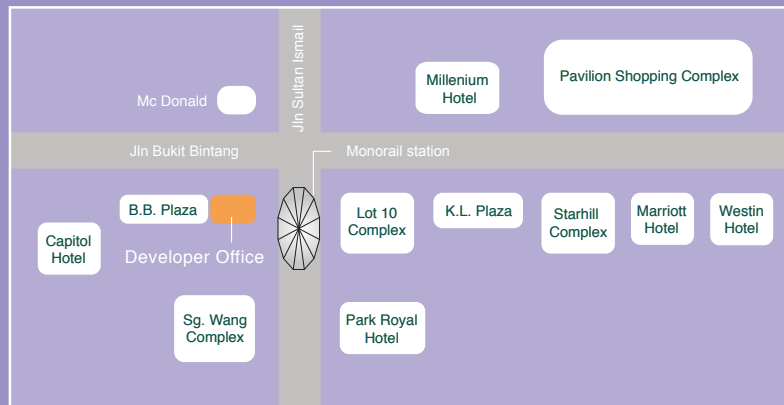
Operator  


The Legend Group of Hotels & Resorts  
 Putra Place, 100 Jalan Putra, 50350  
 Kuala Lumpur Malaysia.



The Developer is registered with  
 Real Estate & Housing Developers' Association Malaysia  
 REHDA ( Reg. No : HDA2200NS 0125/04 )

### Kuala Lumpur Head Office



TEL +603 2144 7768

FAX +603 2144 7798

EMAIL mail@klmetropolitan.com

WEBSITE www.klmetropolitan.com

### Dubai office

404 Al Attar Tower, Sheikh Zayed Road P O Box 119834, Dubai, UAE

Email : mail@klmetropolitan.com

The next quarterly circulars will be issued in May, Aug & Nov 2005.

*A Trusted Name : Kuala Lumpur Metro Group : the Multiple Award-winning Company*



CNBC's International Property Awards  
 ( London ) 2007

- \* "Best Architecture "
- \* "Best Development "



6th Asia Pacific International  
 Honesty Enterprise Keris Award 2007



3rd Malaysia Business of The Year Award

- \* "Emerging Entrepreneur of The Year 2008 "
- \* "Superior Company "