

KUALA LUMPUR METRO GROUP

Quarterly Circular

ISSUE 14

Apr - Jun 2007



Developer



Kuala Lumpur Metro Development Sdn. Bhd. (622637-K)
(a member of Kuala Lumpur Metro Group)

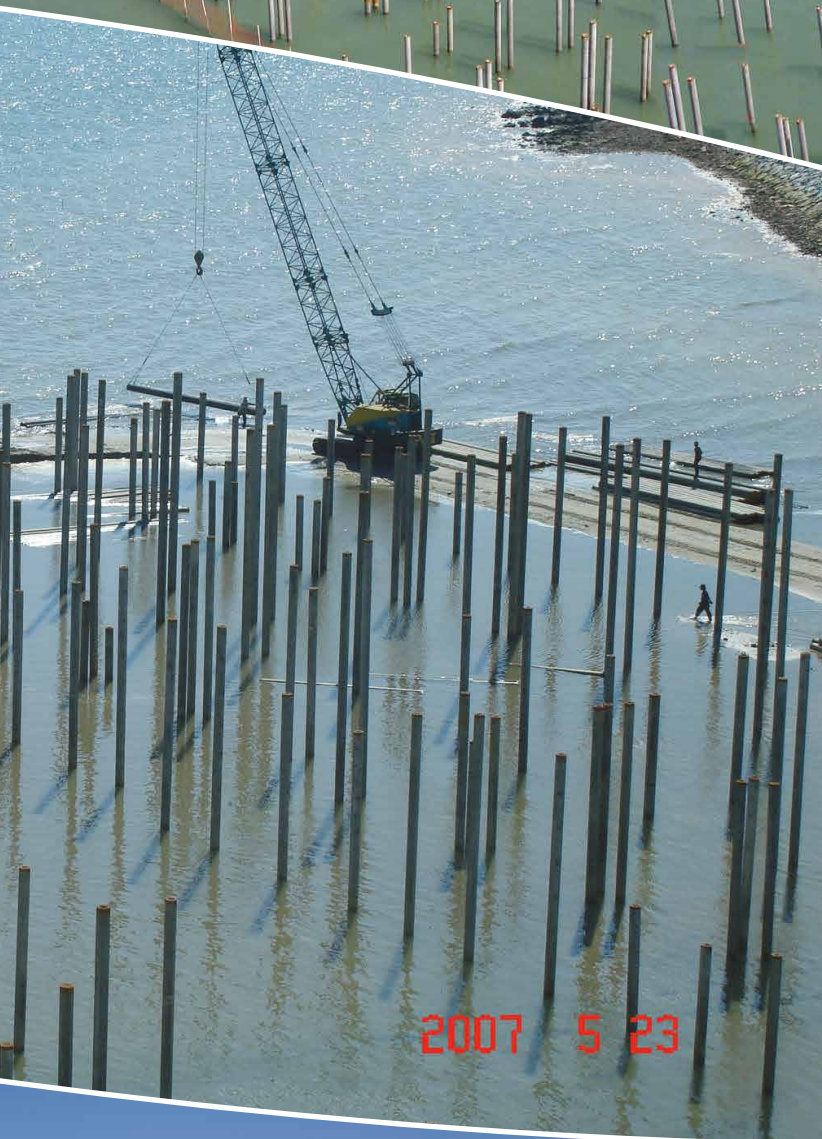
CONSTRUCTION PROGRESS APR - JUN 2007

As at June 2007, piling works have been completed for all units of Type B, C, D & E.

Progressing way ahead of schedule, piling works for the entire project is scheduled for completion in August 2007.

Piling works for Type D & E Garden Chalets have been completed since May 2007.





Garden Chalet
Type E (Upper Floor) Interior

Actual unit (Type E No 6) completed



Set upon the reclaimed land with stunning view embracing the seas, the beautifully landscaped open-air garden and outdoor shower, blends seamlessly with the infinity pool, offering a true sense of retreat home living !

A zen~like terrace garden with private pool creates an environment for renewal & perfect relaxation.



Actual unit (Type E No 6) completed



Each feature-home is furnished with two exquisitely designed king-sized beds with materials of the highest quality while maintaining the Balinese's characteristic !

The delicate architecture of WC set up with outdoor garden & pool view is another unique feature of our innovative design which brings one closer to nature !

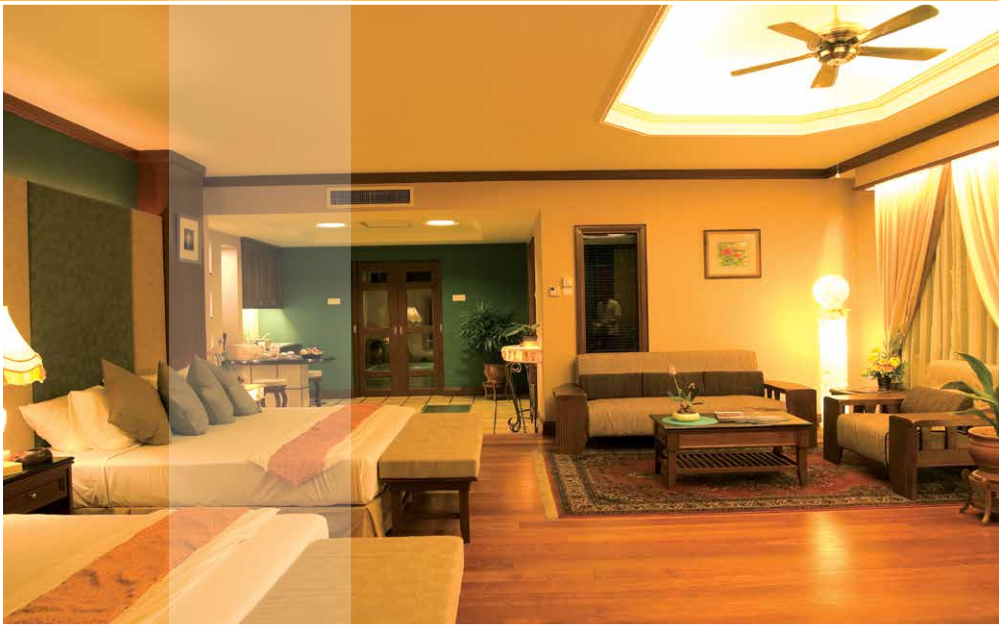
Garden Chalet
Type E (Upper Floor) Interior

Kitchen & bed



Garden Chalet
Type E (Lower Floor) Interior

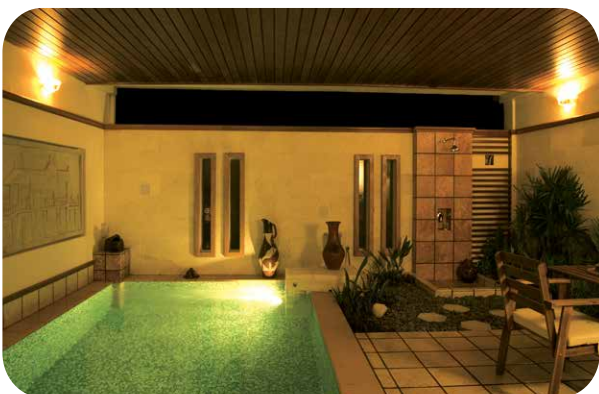
Actual unit (Type E No 6) completed



Spacious design blending the bedroom and living area with Balinese's touch enhances the true sense of luxury living.



There is an openness in the bedroom and living areas with the intelligent use of space which is in harmony with the natural environment, whilst the out door terrace is complemented by private plunge pool and garden.



Fine architectural design that is clearly seen on the exterior outlook of these Garden Chalets is testament of our commitment towards providing the best of fine living. Beautifully landscaped outdoor garden with fountain, against the backdrop of sophisticated architecture themed with high quality timber and broken-stones are the unique breathtaking features of each Garden Chalet.



Royal Visit



An imperial visit by Head of the State, His Royal Highness, DYMM Tuanku Ja'afar Ibni Al-Marhum Tuanku Abdul Rahman, accompanied by directors of Kuala Lumpur Metro Group, palace & government officials in May 2007 to our first completed water chalet projects, The Legend Water Chalets, marks another great achievement to the hallmark of this fascinating project !

Developer



Kuala Lumpur Metro Development Sdn. Bhd. (622637-K)

(a member of Kuala Lumpur Metro Group)

Suite 8.1, 8th Floor, Yayasan Selangor Building No. 99, Jalan Bukit Bintang,
55100 Kuala Lumpur.

Operator



The Legend Group of Hotels & Resorts

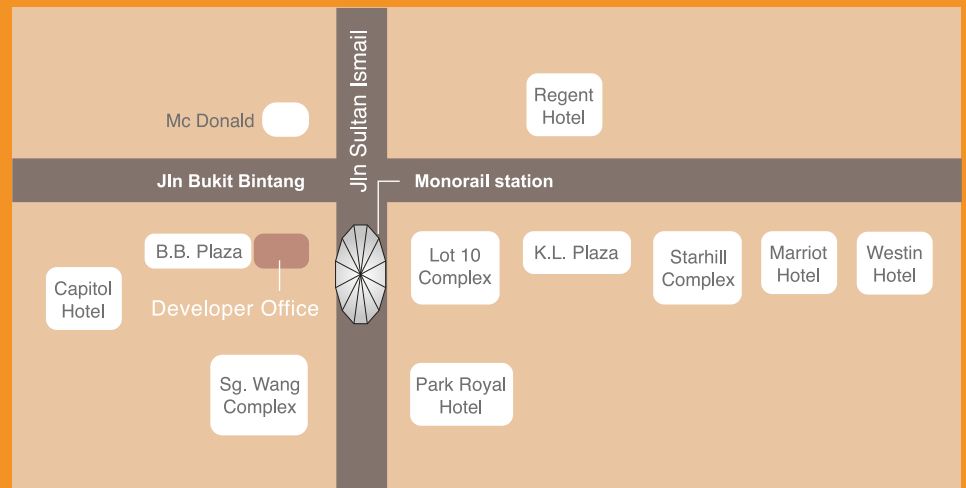
Putra Place, 100 Jalan Putra, 50350 Kuala Lumpur.

Marketing Consultants



Eastern Standard Property Consultants

Suite 6C, 6th Floor, Man Hoo Court, 448-452 Nathan Road, Hong Kong.



KL METRO

TEL +603 2144 7768

FAX +603 2144 7798

EMAIL mail@klmetropolitan.com

WEBSITE www.klmetropolitan.com

The next quarterly circulars, for the year 2007, will be issued in September & December 2007.



The Developer is registered with Real Estate & Housing Developers' Association Malaysia - REHDA (Reg. No. : HDA2200NS 0125/04)