

KUALA LUMPUR METRO GROUP

www.klmetropolitan.com

Issue 38 | Apr ~ Jun 2013

Quarterly Circular

METROPOLIS



The Hibiscus – an awe-inspiring site undergoes significant transformation



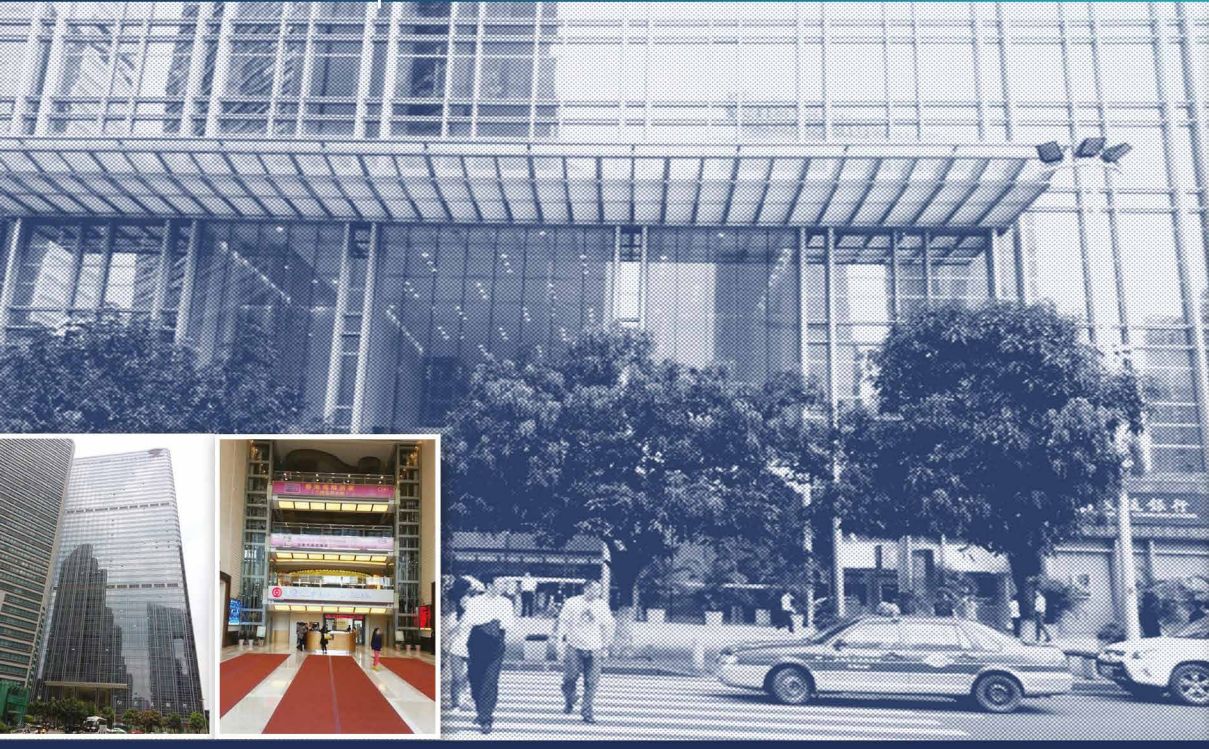
Kuala Lumpur Metro Group
(strive for innovation & excellence)

The Hibiscus at Port Dickson Construction Progress



While speed and control of quality are of paramount importance, the Hibiscus site is a dynamic view with a wide range of construction activities in progress. Significant new materials and equipments are being delivered to the site to facilitate such progress.

Apart from the major development of the adjacent hotel, the construction works of exterior walls and infrastructures of the Hibiscus are also undertaking in full swing with stringent monitoring. Some of the villas are at the start of finishing trades such as floor and wall finishes.



KL Metro Group – Spreading its Wings to Guangzhou, China

To expand our global reach through our dedication to excellence and our drive to grow, we are pleased to announce KL Metro Group has established a new branch office in Guangzhou, China to accommodate our overseas expansion plan, paving the way for our diversification to meet with success.

As befits a prominent property developer, this new office is located in a prime financial district of Tian He, Guangzhou that can well reflect our sterling corporate image, while harnessing our ever-increasing business landscapes.

Asia Pacific Property Awards 2013

While commitment to attain higher levels of quality performance has been the watchword of KL Metro Group, it is further evident by its recent receipt of the prestigious Asia Pacific Property Award 2013 under the category of Leisure Architecture for the quality and ingenuity of work in the Hibiscus project. The award presentation ceremony was held at Shangri-La Hotel, Kuala Lumpur in May 2013.



Puncak Saujana, Kajang

Here is the preview of the upcoming housing project of KL Metro Group :

Puncak Saujana, Kajang

Targeted to launch in late 2013, this housing project features high-end semi-detached properties, specially designed with nature's abundance in mind to redefine urban sanctuary.

Served as a peaceful residential respite, it is a fusion of modern, sleek designs, exquisite luxury and sumptuous living spaces that will aptly make this elite enclave the most coveted address at Kajang.

KL Metro Group's devotion to master-planning is evident in its green. Unlike conventional homes, every unit is surrounded by ample greenery and verdant views with abundant natural light. It also embraces green building concept coupled with resource-efficient measures for energy savings, water conservation and waste reduction.

Puncak Saujana emanates a vibrant atmosphere of tranquillity and luxury, truly perfect for those who are seeking a private sanctuary within a city.



A trusted brand name of excellence : KL Metro Group – the multiple award winning company



6th Asia Pacific
International Honesty
Enterprise Keris Award 2007



CNBC's International
Property Awards
(London) 2007



3rd Malaysia Business
of The Year Award 2008



Asia Pacific Commercial
Property Awards in association
with Bloomberg Television
(Hong Kong) 2010



Century International
Quality Gold ERA
(Geneva) 2011



1080 Kajang Show Unit - Living Area



1080 Kajang Show Unit - Master Bedroom



1080 Kajang Show Unit - Master Bathroom



M.A. USA 2012



2012 : Grand Lexis
< most number of swimming
pool in a resort >



2013 : Grand Lexis
< 5 star hotel certification >
by ministry of Tourism Malaysia



Asia Pacific
Property Awards
(Kuala Lumpur) 2013

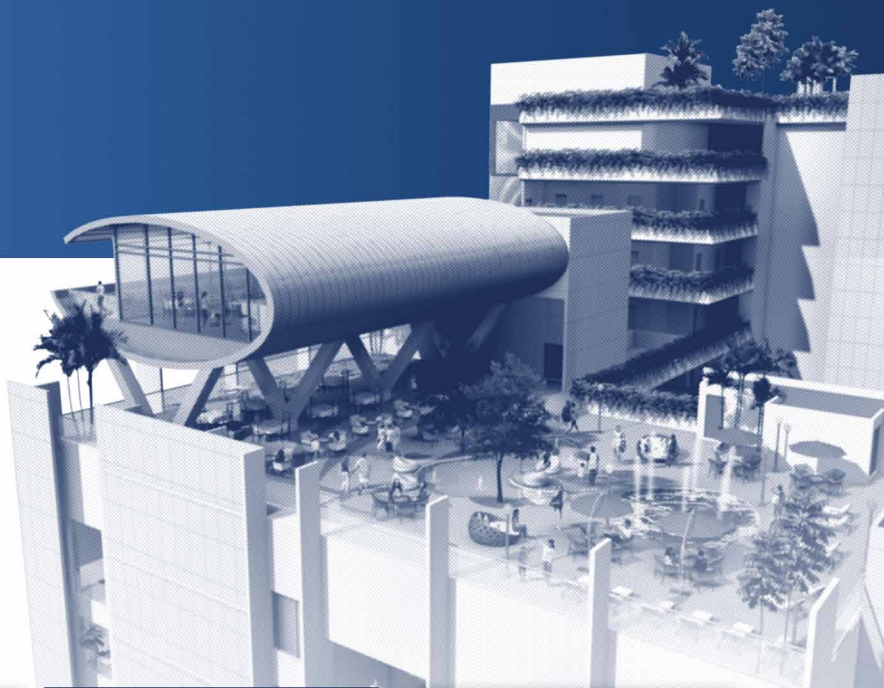


Star Leadership Quality Award
(Paris) 2013

Lexis Suites, Penang

Staying on Top . . . Progress of Other Prominent projects

A turnkey development with world-class amenities and facilities that sets to be an iconic landmark on the beachfront of Teluk Kumbar, Penang.



Tropika Putra

Combined with a thoughtful array of features designed to nurture a sense of belonging to the dwellers, Tropika Putra offers exception value for space, style, comfort and convenience. Construction is well underway towards completion in late 2013.



One of the special infrastructure constructions being built is the spacious boardwalks that link an exceptional collection of luxuriously furnished villas, commanding a majestic view of the open sea, while reveals its many splendours right before you.



After months of major construction, the Hibiscus continues to make noticeable progress, on schedule and on track. A beautiful Hibiscus flower is taking shape in the turquoise waters of Port Dickson.

Representing a seamless confluence of living and relaxation, the Hibiscus is a uniquely designed resort resonating great beauty and peacefulness. With a masterstroke of contemporary excellence, it is a perfect blend of aesthetic appeal and innovative modern design that gives a truly magnificent living experience and tranquil lifestyle with a touch of luxury.

KL Metro Group – Building the Future
 In Association with a strong team of international consultants and advisors

DEVELOPER



Kuala Lumpur Metro Group
 Level 15 Pavilion Tower
 No 75, Jalan Raja Chulan
 50200 Kuala Lumpur, Malaysia

DESIGN ARCHITECT



Broadway Malyan, London
 Riverside House
 Southwark Bridge Road
 London SE1 9HA

INTERIOR DESIGN CONSULTANTS



UD & A Consultant
 No. 211, Room 1707 Block 2
 Wen Ding Road
 200030 Shanghai, China

MARKETING CONSULTANTS



AP Assets Ltd
 Unit 1904, 19/F, Sino Plaza
 255 Gloucester Road
 Causeway Bay, Hong Kong

OPERATOR



Lexis Hotel Group
 31st Floor, Sunway Putra Tower
 100 Jalan Putra
 50350 Kuala Lumpur, Malaysia

SINGAPORE REPRESENTATIVE



ERA Realty Network Pte Ltd
 743 Lorong 5 Toa Payoh
 Harsing Hub, Singapore 319457

Long-term affiliated member of professional bodies and trade associations



Real Estate & Housing Developers'
 Association Malaysia - REHDA
 (Reg. No. HDA 2200NS 0125 / 04)



Malaysia Association of Hotels
 (Reg. No. NS / 0626 / 09)



Malaysia Association of Hotel Owners
 (Reg. No. OM / 2012 / 80 - B)



Malaysian Association of
 Tour & Travel Agents
 (Reg. No. MA / 4118)



Pacific Asia Travel Association
 (Reg. No. HTL / 427 / 12 - 03)